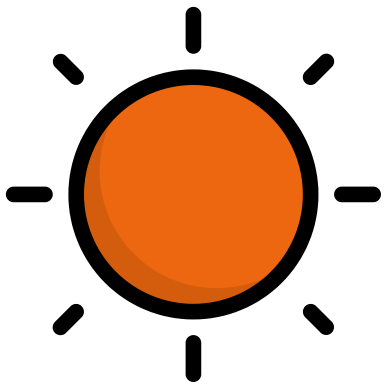
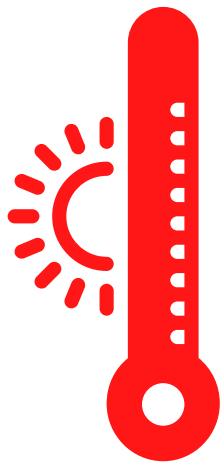


# EL TIEMPO ATMOSFÉRICO

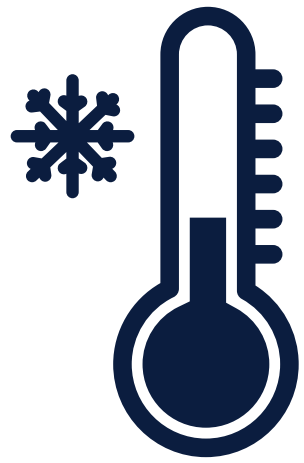




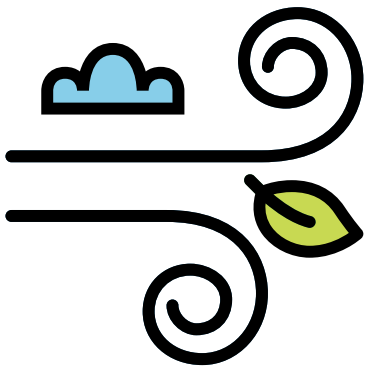
**El sol**  
**Hace sol**



**Hace calor**



**Hace frío**



**Hace viento**



**Hay tormenta**



**Hay niebla**



**Está nevando**  
**Nieva**



**Está nublado**



**Está lloviendo**  
**Llueve**



**El tornado**  
**El huracán**



**La luna**  
**Las estrellas**



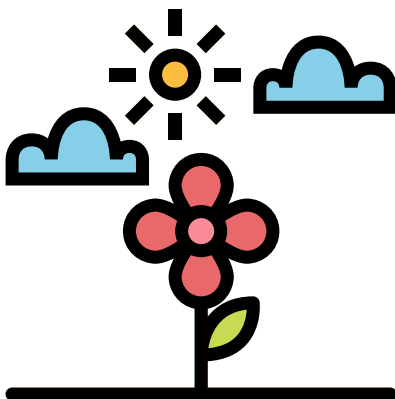
**El arcoiris**



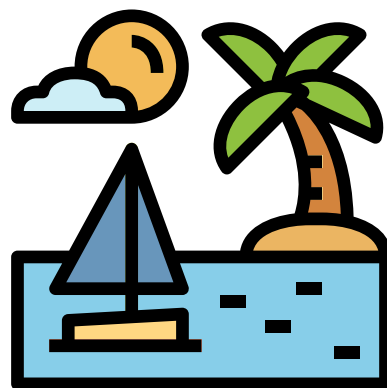
**El atardecer**



**El amanecer**



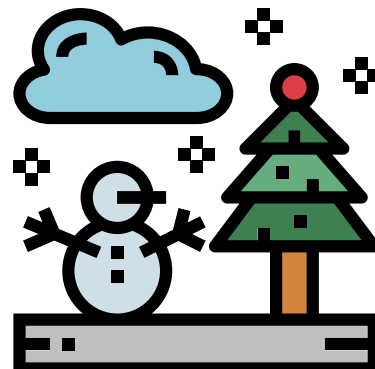
**La primavera**



**El verano**



**El otoño**



**El invierno**